

COURT OF COMMON PLEAS
State of Delaware

2020 Annual Report Statistical Information

COURT OF COMMON PLEAS

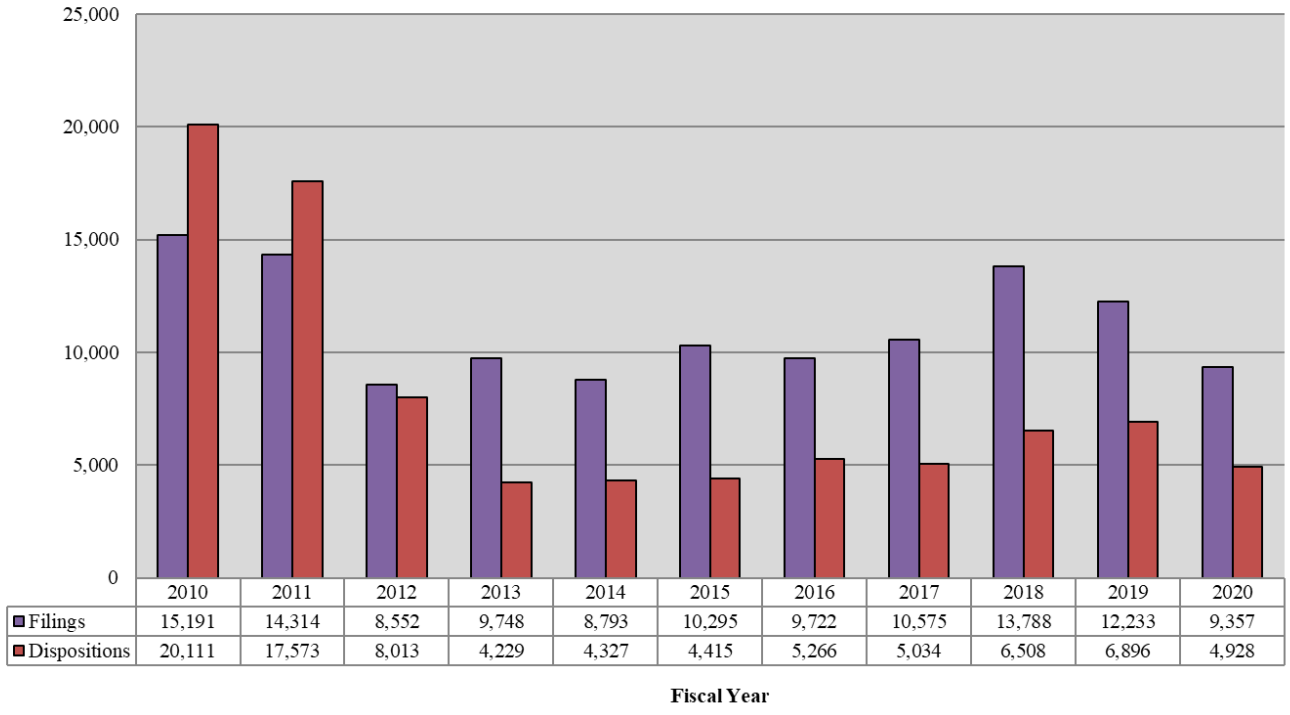
Caseload Summary - Fiscal Years 2019-2020 - Civil Case Filings				
	2019	2020	Change	% Change
New Castle County	7,040	5,499	-1,541	-21.9%
Kent County	2,648	1,922	-726	-27.4%
Sussex County	2,545	1,936	-609	-23.9%
State	12,233	9,357	-2,876	-23.5%

Caseload Summary - Fiscal Years 2019-2020 - Civil Case Dispositions				
	2019	2020	Change	% Change
New Castle County	3,718	2,741	-977	-26.3%
Kent County	1,452	1,057	-395	-27.2%
Sussex County	1,726	1,130	-596	-34.5%
State	6,896	4,928	-1,968	-28.5%

Caseload Breakdowns - Fiscal Year 2020- Civil Case Filings						
	Complaints		Civil Judgments, Name Changes & Appeals		Total	
New Castle County	3,802	69.1%	1,697	30.9%	5,499	100%
Kent County	1,264	65.8%	658	34.2%	1,922	100%
Sussex County	1,296	66.9%	640	33.1%	1,936	100%
State	6,362	68.0%	2,995	32.0%	9,357	100%

Percentages may not total 100 due to rounding.

Court of Common Pleas 10-Year Civil Caseload Trend



COURT OF COMMON PLEAS

Caseload Summary - Fiscal Years 2019-2020 - Criminal Misdemeanor Case Filings				
	2019	2020	Change	% Change
New Castle County	40,711	37,280	-3,431	-8.4%
Kent County	21,926	19,228	-2,698	-12.3%
Sussex County	26,125	22,654	-3,471	-13.3%
State	88,762	79,162	-9,600	-10.8%

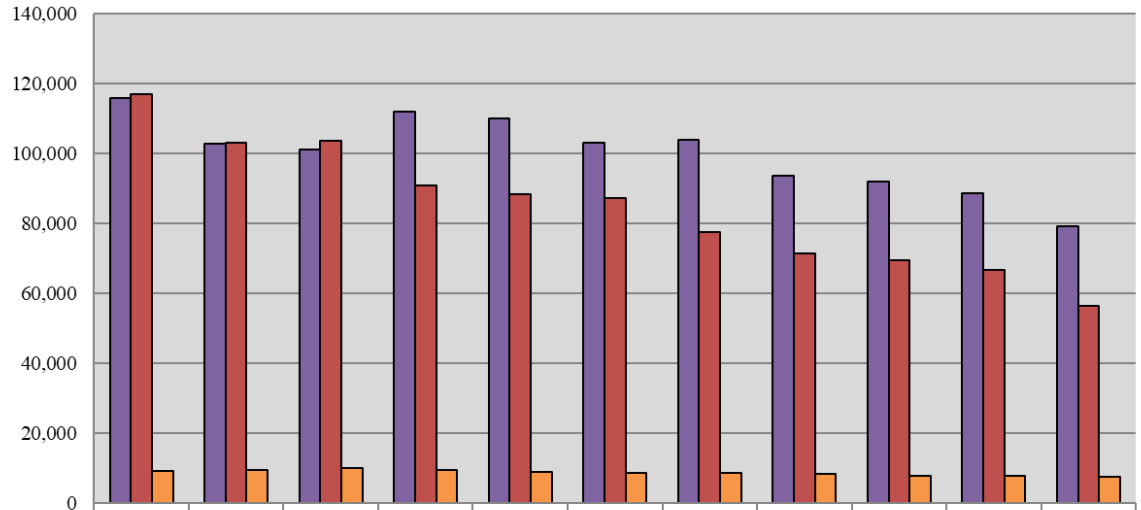
Caseload Summary - Fiscal Years 2019-2020 - Criminal Misdemeanor Case Dispositions				
	2019	2020	Change	% Change
New Castle County	30,973	25,927	-5,046	-16.3%
Kent County	15,005	15,477	472	3.1%
Sussex County	20,661	14,918	-5,743	-27.8%
State	66,639	56,322	-10,317	-15.5%

Caseload Summary - Fiscal Years 2019-2020 - Criminal Preliminary Hearing Case Filings				
	2019	2020	Change	% Change
New Castle County	3,974	3,837	-137	-3.4%
Kent County	1,769	1,640	-129	-7.3%
Sussex County	1,996	2,043	47	2.4%
State	7,739	7,520	-219	-2.8%

*Includes Contempt of Court cases.

Source: Court Administrator, Court of Common Pleas; Administrative Office of the Courts.

Court of Common Pleas 10-Year Criminal Caseload Trend



	2010	2011	2012	2013	2014	2015	2016	2017	2018	2019	2020
■ Misdemeanor Filings	115,882	102,939	101,284	112,004	110,071	103,176	103,825	93,630	92,008	88,762	79,162
■ Misdemeanor Dispositions	116,926	103,209	103,802	90,873	88,507	87,366	77,673	71,401	69,504	66,639	56,322
■ Preliminary Hearings	9,066	9,590	9,917	9,398	9,011	8,621	8,689	8,402	7,798	7,739	7,520

Fiscal Year

COURT OF COMMON PLEAS

Caseload Summary - Fiscal Years 2019-2020 - Total Criminal Misdemeanor and Civil Case Filings

	2019	2020	Change	% Change
New Castle County	47,751	42,779	-4,972	-10.4%
Kent County	24,574	21,150	-3,424	-13.9%
Sussex County	28,670	24,590	-4,080	-14.2%
State	100,995	88,519	-12,476	-12.4%

Caseload Summary - Fiscal Years 2019-2020 - Total Criminal Misdemeanor and Civil Case Dispositions

	2019	2020	Change	% Change
New Castle County	34,691	28,668	-6,023	-17.4%
Kent County	16,457	16,534	77	0.5%
Sussex County	22,387	16,048	-6,339	-28.3%
State	73,535	61,250	-12,285	-16.7%

Source: Court Administrator, Court of Common Pleas; Administrative Office of the Courts.

Court of Common Pleas 10-Year Total Caseload Trend (Civil & Criminal)

